



SOLID
TO SUCCEED



ARTICULATED BOOM LIFT

XGS58K

Comply with CE

Standard configuration

- 2.4 m × 0.9 m 3-entry work platform
- 460 kg platform loading capacity
- 160° platform rotation
- 12 V DC auxiliary power
- Engine condition monitoring and start protection device
- 4-wheel drive (standard)
- Foam-filled tire
- Lowering and moving alarm
- Tilt alarm
- Horn
- Overload and amplitude limit detection
- Chassis tilt protection
- Jib centering and rotating detection
- Limiting position deceleration
- Work platform tilt protection
- Wire rope anti-loosening detection
- Emergency stop device of platform and chassis
- Emergency power unit
- 4-wheel braking system
- Self-leveling platform
- Proportional joystick control
- Drive enable
- Hourmeter
- Lockable engine house
- 360° continuous turntable rotation
- Full time positive traction drive
- Full speed traveling motor
- Telematics pre-interface
- Active defense protection system
- Harsh environment kits
- Thumb rocker steering
- Wind speed monitoring protection device



Working height
58.6 meters



Lift capacity
230/450Kg



Diesel
power



Optional configuration

- Tool tray
- Working light assembly
- Operator anti-crushing protection system

XCMG FIRE-FIGHTING SAFETY EQUIPMENT CO.,LTD

No.17 Zhujiang East Road, Hi-Tech Development Zone, Xuzhou, Jiangsu, China
mewp@xcmg.com

XGS58K



SOLID
TO SUCCEED

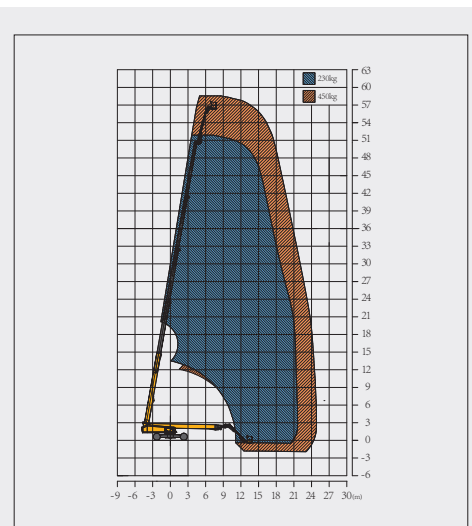
Articulated Boom Lift-Engine Powered

Item	Metric	
Dimension		
Overall dimension - stowed state	Length	19450mm
	Width	2490mm
	Height	3070mm
Overall dimension - transportation	Length	14600mm
	Width	2490mm
	Height	3070mm
Platform dimension	Length	2400mm
	Width	900mm
	Height	1150mm
Wheelbase (axle retracted/axle extended)	5220mm/4590mm	
Overall width (axle retracted/axle extended)	2490mm/5030mm	
Fly jib length (fully retracted/fully extended)	3970mm/5970mm	
Min. ground clearance	250mm	

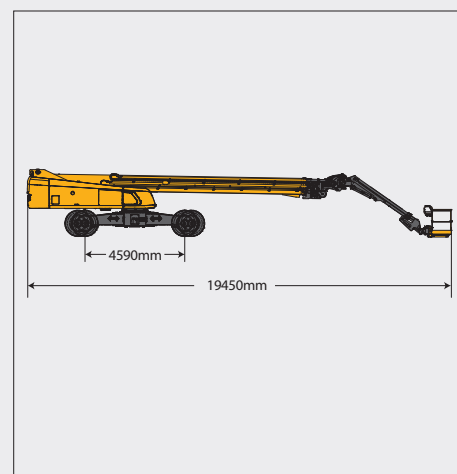
Performance	
Max. working height	58.6m
Max. platform height	56.6m
Max. working range	24.4m
Max. lift capacity	230kg (unlimited)/450kg(limited)
Max. number of occupants	3
Max. working slope	X-3°/ Y-3°
Telescopic boom luffing range	-1°~80°
Fly jib luffing range	-45°~75°
Turntable rotation	360°
Platform rotation	160°
Total weight	27900 kg
Driving speed (stowed)	4.5 km/h
Driving speed (raised or extended)	0.5 km/h
Min. turning radius-axle retracted (inside/outside)	13810/17140mm(2-wheel) 7100mm/9500mm(4-wheel)
Min. turning radius-axle extended (inside/outside)	2800mm/9200mm(2-wheel) 2300mm/6600mm(4-wheel)
Turntable tailswing (axle retracted/axle extended)	2320mm/1050mm
Max. gradeability	45% (24°)

Power source	
Control	12V DC proportional control
Emergency power supply	12V/200Ah
Engine model	Yuchai/YCF30100-T481
Engine-power/rpm	74kW(2200r/min)
Max. engine torque	385N·m
Engine emission standard	CN 4
Hydraulic tank capacity	330L
Fuel tank capacity	200L

Tire	
Tire size	1162mm×445mm
Tire ground pressure	13kg/cm ²
Driving wheels	4
Braking wheels	4
Steering wheels	4



Stowed



Trans

